

DARKMATTERX

DM-2 SHIFTER BOX INSTALLATION GUIDE



PREPARATION AND SAFETY

Before doing any work on the vehicle, ensure that the vehicle is safely secured onto a lift or jack-stands with all safety pins or latches in place to prevent a serious injury from taking place. The vehicle needs to be high enough off the ground to crawl or stand under. When working under the vehicle, always wear gloves and eye protection to prevent foreign debris from getting into your eyes. Having a light under the vehicle is a must, and will make the install process much smoother! If you can, having an extra set of hands will speed up the process.

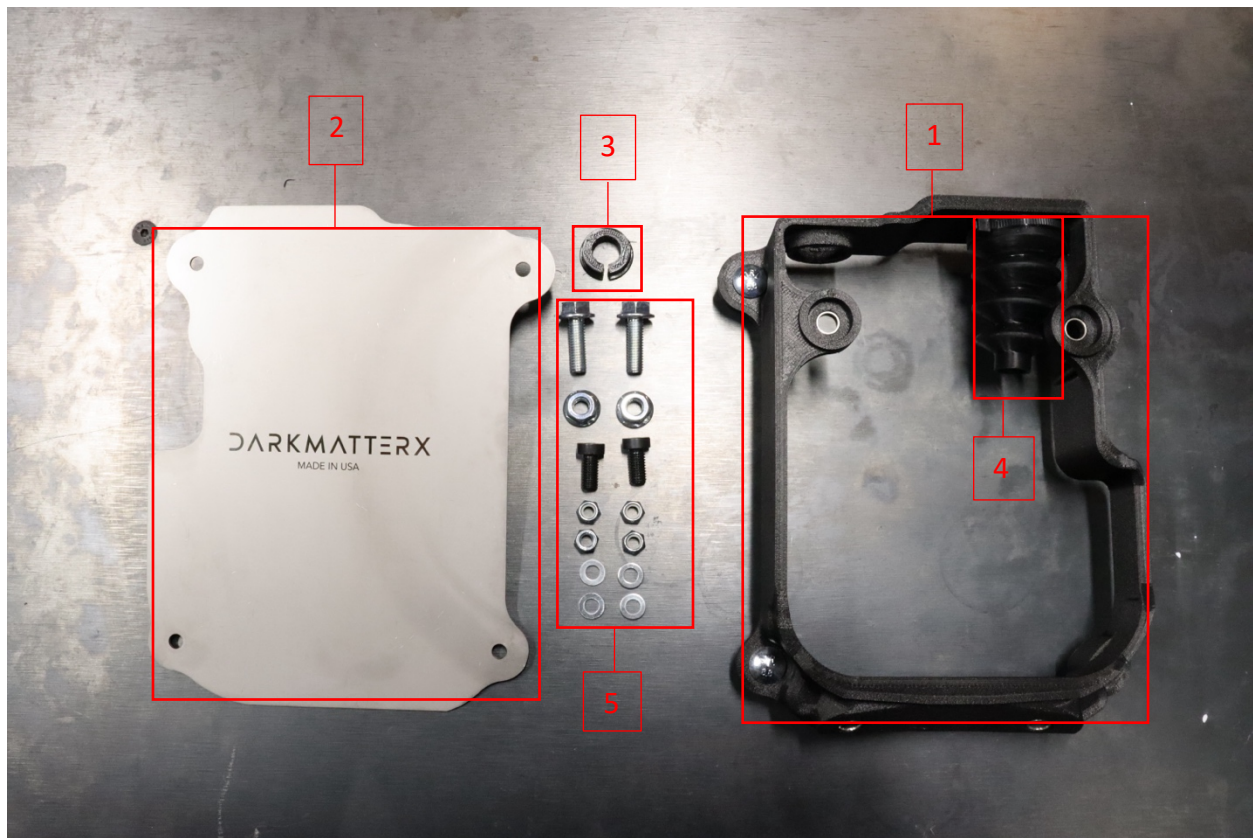
TECHNICAL SUPPORT

Technical support from is available for you in the event that you need it! Please read through the install guide before contacting us with a question. We can be reached through email at support@darkmatterx.com.

KIT CONTENTS

Before starting the install procedure, locate all of the components in the kit by removing the Access Panel from the Main Flange and laying out the hardware. Once the Access Panel has been removed, you should have the following items:

- 1.) Main Flange
- 2.) Access Panel
- 3.) OEM Cable Grommet
- 4.) DM-2 Shift Linkage Boot (pre-installed on Main Flange)
- 5.) Hardware:
 - (2) M8X1.25mm Flanged Bolt
 - (2) M8X1.25mm Low Profile Socket Head Bolt
 - (2) M8X1.25mm Flanged Nut
 - (4) M6X1mm Nylon Lock Nut
 - (4) M6 Flat Washer



RECOMMENDED TOOLS

- 1.) Needle Nose Pliers
- 2.) 3/8" Driver
 - a. Extension
 - b. 10mm Socket
 - c. 12mm Socket
 - d. 13mm Socket
- 3.) 5mm Allen Wrench
- 4.) 6mm Allen Wrench
- 5.) Phillips Screw driver
- 6.) 13mm Box Wrench

STEP 1: DM-2 REMOVAL

Remove shift knob, shifter trim, and kick panels on the driver and passenger side.



Remove the (5) bolts securing the DM-2 into the chassis. Also remove the bolt connecting the shift linkage To the DM-2.

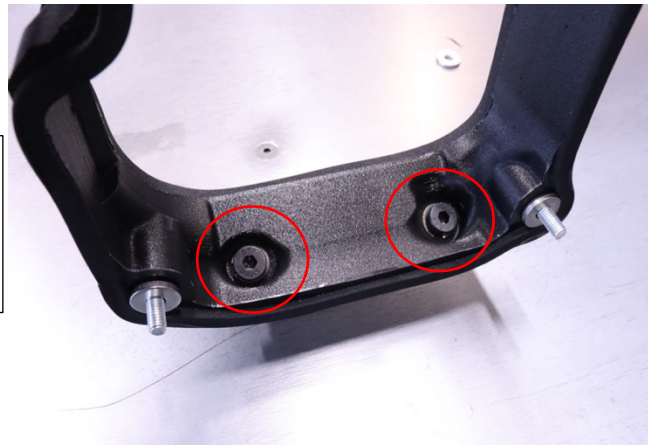


Disconnect the OEM shift cable from the DM-2 by removing the OEM cable hanger bracket and pulling the hitch pin from the cables connection point on the DM-2. Rotate the DM-2 counter clock wise so that it can be pulled out of the transmission tunnel.



STEP 2: Main Flange Install

Grab the Main Flange and (2) M8X1.25mm Low Profile Socket Head Bolts. These bolts go into the rear wall on the Main Flange as As pictured here.

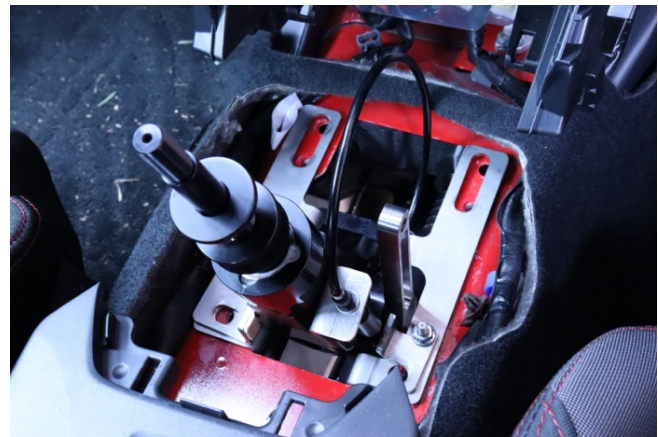


Insert the Main Flange above the driveshaft and use a 5mm allen wrench to secure the (2) bolts into the chassis of the car.

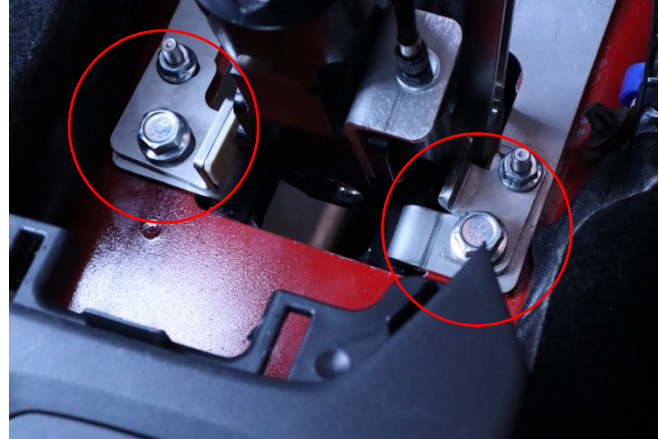




Insert the DM-2 back into the transmission tunnel.



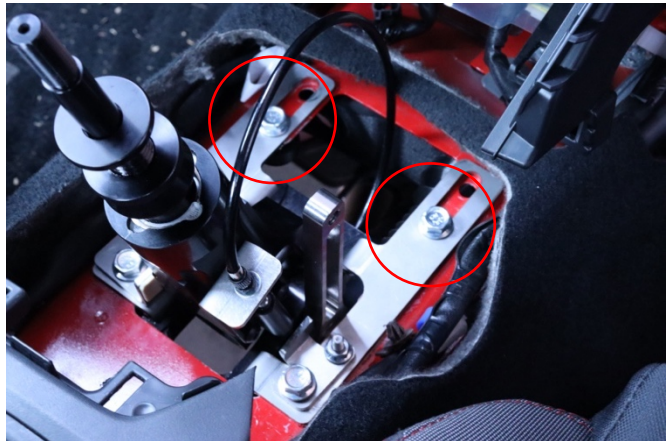
Insert the same (2) M8X1.25mm mounting bolts back into the Rear of the DM-2. Keep these bolts loose for now, so that the DM-2 can still be moved around.



Next, locate the (2) supplied M8X1.25mm bolts from the hardware kit. These bolts will replace the front (2) mounting bolts that were previously removed. These bolts are longer and will allow the Main Flange to be secured.



FOR DM-2 SHIFTERS PURCHASED AFTER 09/2023 THESE BOLTS ARE SUPPLIED WITH DM-2 SHIFTERS AND DO NOT NEED TO BE REPLACED WITH THE ONES IN THIS STEP.



Locate the OEM cable holder bracket.



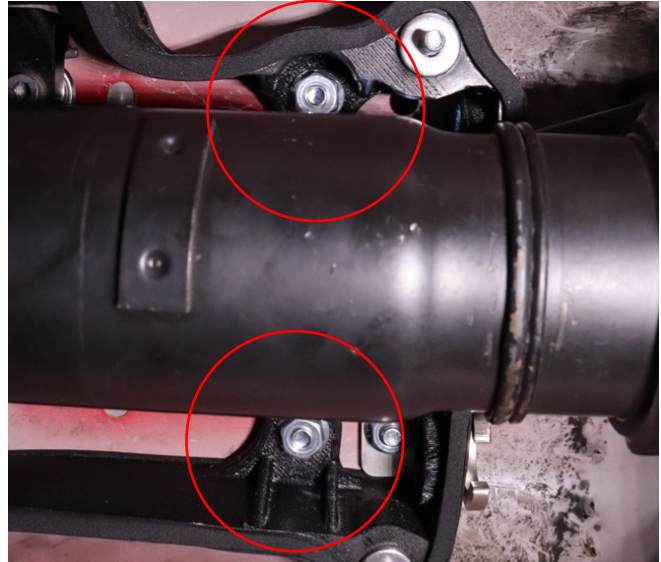
Gently place the OEM cable holder bracket back into its previous position. The main flange has a foam seal that the bracket will be passing over when you re-install it. Slightly pulling down on the main flange will help create clearance for this process.



The bracket can now be fully tightened with its original hardware. Ensure the bracket keeps parallel alignment with the main flange.



Install the (2) supplied M8X1.25mm nuts from the hardware bag to finish securing the main flange.



STEP 3: INSTALL SHIFT LINKAGE

Remove the rod end on the side of the DM-2 shift linkage that connects to the shifter.

From under the vehicle, feed the open end of the shift linkage through the passenger side of the main flange. There is a rubber bellow pre-installed onto the Main flange, the linkage must past through this.

Re-install the rod end back onto the shifter and adjust it into place. Tighten the jam nut when put into place.



STEP 4: INSTALL OEM CABLE

Locate the rubber grommet that is supplied with the kit and place it on the OEM shift cable.



There is a slot on one section of the grommet that will allow the OEM cable to pass through it. Orient the grommet so that the flanged side is facing the front of the vehicle.



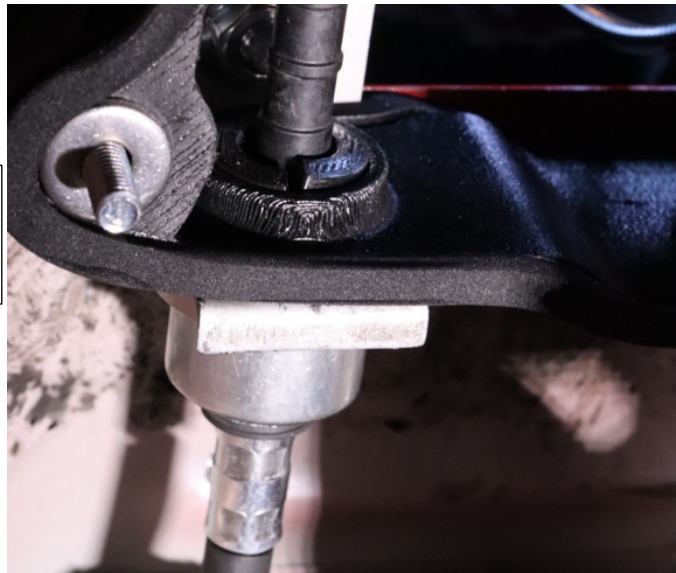
The grommet can be pushed into the box to form a tight seal against the cable. Start by pushing in one side first, and then working your way around until it is nearly flush with the main flange.



Locate the OEM cable clip

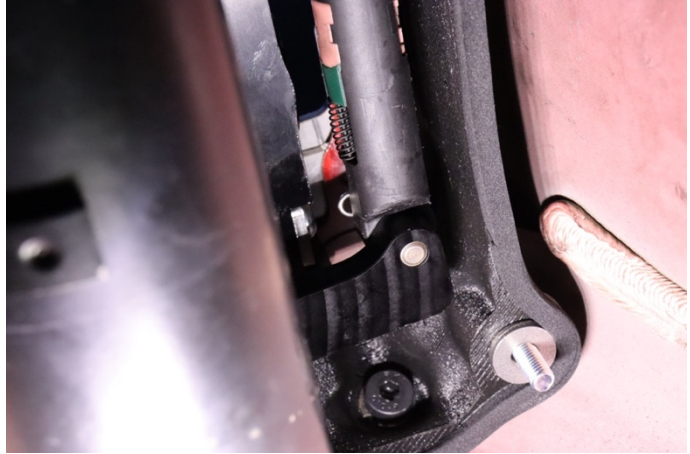


Re-install the OEM cable clip with the flanged edge facing the front of the vehicle.



Install the OEM cable onto the shifter. It is crucial that the cable slips directly over shifter with out being tensioned or compressed. If it does not slip straight onto the shifter, then an adjustment will need to be made. To re-align the two components. The DM-2 install guide outlines how to adjust the large plastic piece at the end of the OEM cable into place. Another option could be to move the OEM cable hanger bracket slightly forward or back.





STEP 5: INSTALL ACCESS PANEL & INTERIOR COMPONENTS

You can now install the access panel onto the main flange. Carefully line up the (4) holes in the access panel with the bolts in the main flange. Avoid hitting the bottom of the bolts to prevent them from dislodging out of the main flange. Once the access panel is lined up with the bolts, secure it using the (4) M6 flat washers and (4) M6X1mm Locking nuts.



Before re-assembling the interior, make sure all mounting bolts securing the shifter into the vehicle are tightened and the shifter engages all gears accordingly. Once this is verified, the interior can be re-assembled and the install will be completed.